

LED lighting controll ICs **MV1001SC**

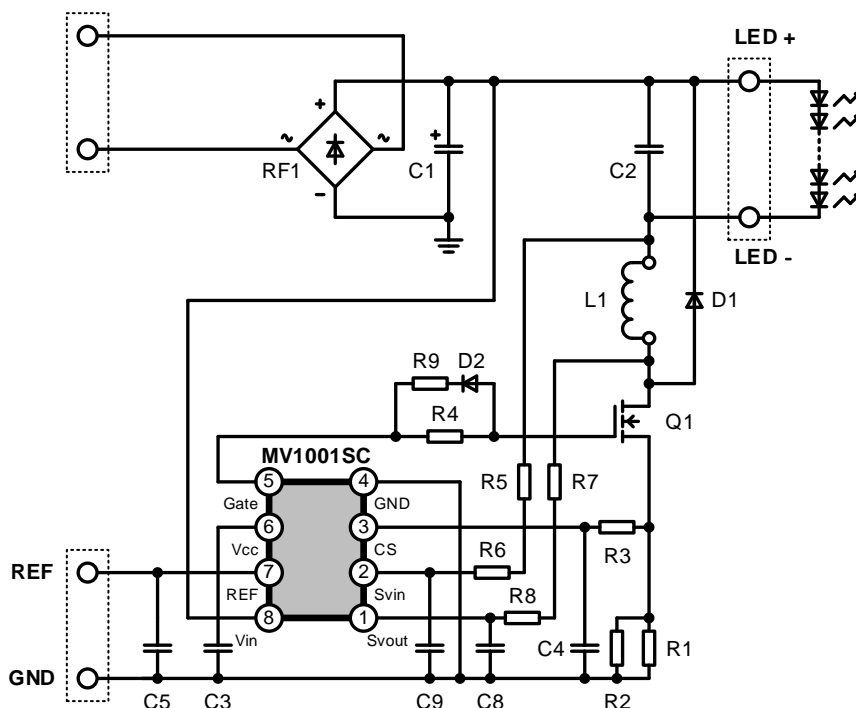
Rectification method : current critical (low-side switch)

Input voltage	AC 85~132V
Output voltage	DC 40V
Output current	0.3A max.
Frequency	40kHz typ.

Notes on the use of this document

- 1. The technical information contained in this document describes the specifications, external dimensional drawings, typical operation, selection of components and handling precautions for the reference circuit of our products.**
- 2. The reference power supplies in this document are for understanding the performance of our products, and do not guarantee output, temperature, and any other characteristics, nor do they guarantee characteristics or safety specified by public authorities.**
- 3. Our products described in this document are semiconductor components for general electronic equipment and general industrial use. Please ensure the safety and reliability of your equipment are in accordance with the criticality of the applications. For further information, please contact our sales department.**
- 4. In applications where extremely high reliability and safety are required (e.g. for nuclear power control, aerospace equipment, traffic equipment, life support-related medical equipment, combustion control equipment and various safety devices), safety design with fail-safe in mind (such as using particularly reliable components) in order to ensure safety is required. For further information, please contact our sales department.**
- 5. Shindengen shall not bear any responsibility with regards to damages or infringement of any third-party patents and other intellectual property rights incurred due to the use of information in this document.**
- 6. Use of information in this document does not provide guarantee for, or grant license for, intellectual property rights and other rights of Shindengen or any third party.**
- 7. If a system employing any of our products described in this document falls under strategic goods under Japan's Foreign Exchange and Foreign Trade Control Law, an export licence from the Japanese Government under the above-mentioned law is required to export such products.**
- 8. The specifications and dimensions of our products listed in this document are subject to change without notice in order to improve their characteristics. When ordering, please contact our sales office as needed and refer to the latest specifications for individual products.**
- 9. No reprinting or reproduction of the materials on this website, either in whole or in part, is permitted without proper authorization from Shindengen.**

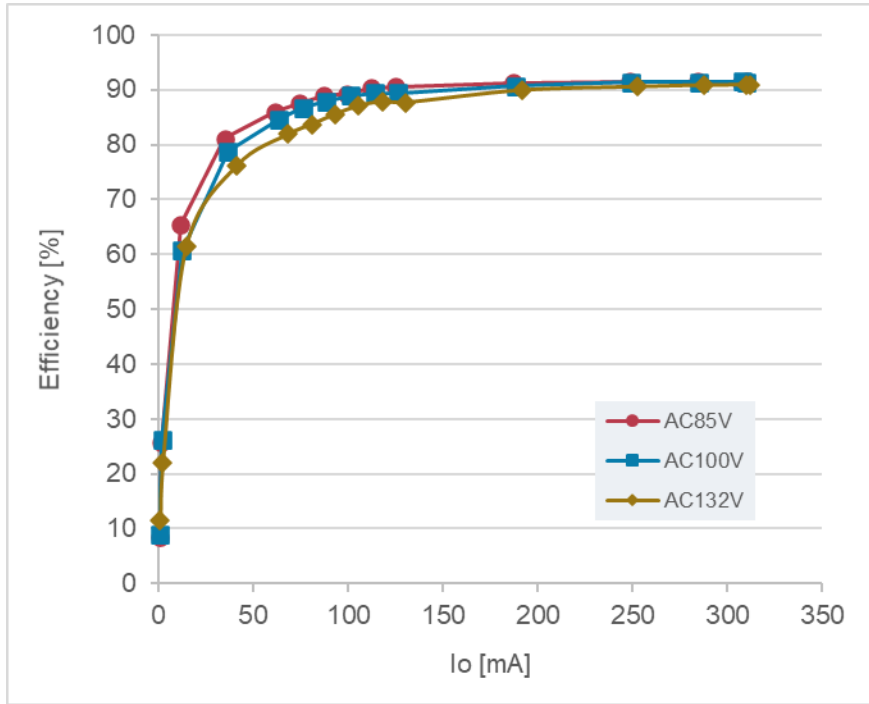
Reference circuit diagram



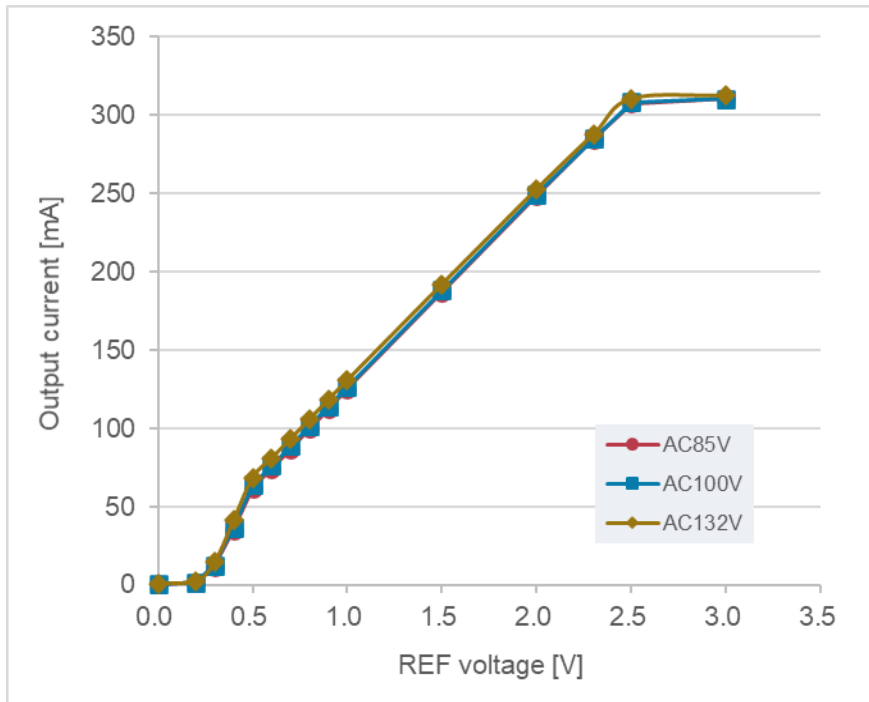
Bill Of Material

No.	Type	Qt'y	Spec	Model Name	Vendor	Remarks
L1	Choke Coil	1	1 mH 0.59 A	SHP1280P-F102A	TCE	-
Q1	Power MOSFET	1	280 V 3 A	P3B28HP2	SHINDENGEN	-
RF1	Bridge Diode	1	800 V 1 A	D1UBA80	SHINDENGEN	-
D1	FRD	1	400 V 1.5 A	D1FL40U	SHINDENGEN	-
D2	-	-	-	open	-	-
C1	Electrolytic Capacitor	1	250 V 22 uF	250BXC22M	Rubycon	-
C2	Electrolytic Capacitor	1	100 V 8.2 uF	100ZLJ8.2M	Rubycon	-
C3	Ceramic Capacitor	1	50 V 0.1 uF	C1608X7R1H104K	TDK	-
C4	Ceramic Capacitor	1	50 V 10 pF	C1608CH1H100J	TDK	-
C5	Ceramic Capacitor	1	50 V 1000 pF	C1608X7R1H102K	TDK	-
C8	Ceramic Capacitor	1	50 V 10 pF	C1608CH1H100J	TDK	-
C9	Ceramic Capacitor	1	50 V 1000 pF	C1608X7R1H102K	TDK	-
R1	Chip Resistor	1	1/8 W 0.82 Ω	SR73 2A T TD R82 F	KOA	1%
R2	Chip Resistor	1	1/8 W 10 Ω	RK73H 2A T TD 10R0 F	KOA	1%
R3	Chip Resistor	1	1/10 W 1 kΩ	RK73B 1J T TD 102 J	KOA	-
R4	-	-	-	short	-	-
R5	Chip Resistor	1	1/8 W 1 MΩ	RK73B 2A T TD 105 J	KOA	-
R6	Chip Resistor	1	1/8 W 430 kΩ	RK73B 2A T TD 434 J	KOA	-
R7	Chip Resistor	1	1/8 W 1 MΩ	RK73B 2A T TD 105 J	KOA	-
R8	Chip Resistor	1	1/8 W 560 kΩ	RK73B 2A T TD 564 J	KOA	-
R9	-	-	-	open	-	-

Efficiency



Output characteristics



* Characteristics may vary slightly depending on filter component constants. Please check with the actual filter circuit.