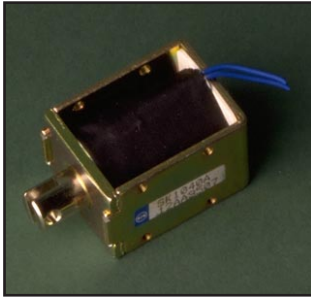


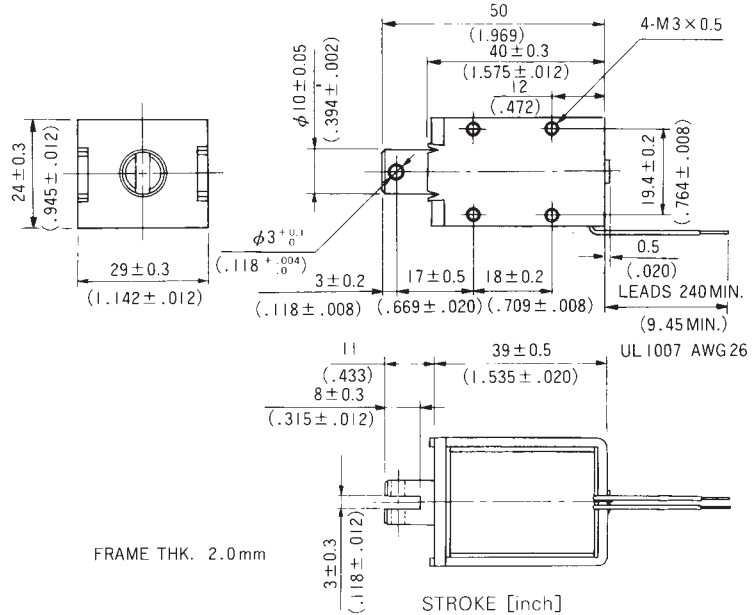
# SK1040A OPEN FRAME SOLENOID

UNIT:  $\frac{\text{mm}}{\text{(inch)}}$

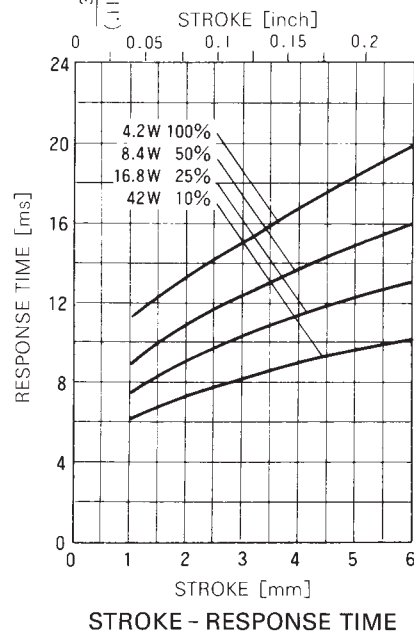
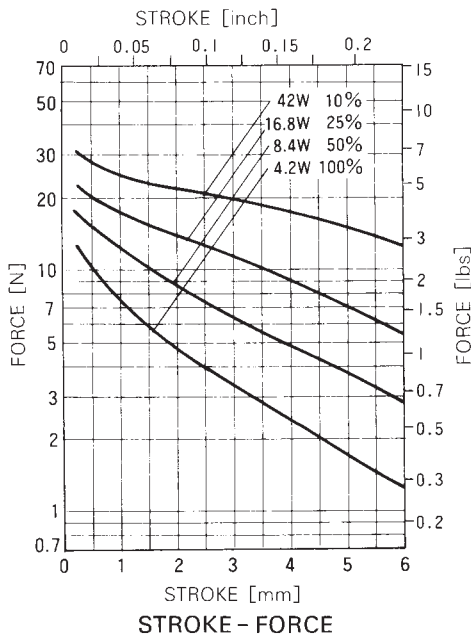
SHOWN ENERGIZED



WEIGHT : 136g  
PLUNGER : 23g



FRAME THK. 2.0mm



## COIL DATA

without heat sink

	duty cycle = $\frac{\text{"on" time}}{\text{"on" time} + \text{"off" time}} \times 100\%$		100% continuous	50% or less	25% or less	10% or less
	MAX. "on" time in seconds		$\infty$	100	36	7
	watts at 20°C		4.2	8.4	16.8	42.0
	ampere-turns at 20°C		635	898	1270	2008
type no.	resistance $\Omega \pm 10\%$ (at 20°C)	no. turns	volts DC			
SK1040A06AA	9	1020	6	8.5	12	19
SK1040A12AA	34	2000	12	17	24	38
SK1040A24AA	137	3625	24	34	48	76
SK1040A48AA	549	7420	48	68	96	152

1 - 800 - 543 - 6525